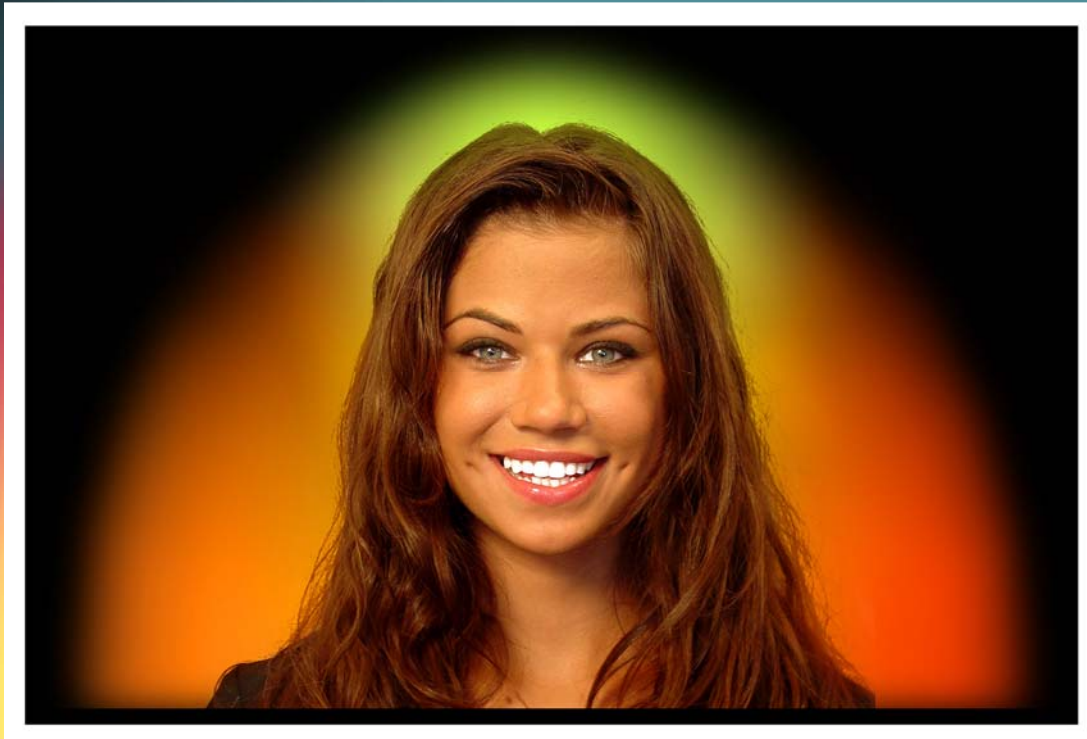


Sample !



Aura Chakra Report



YOUR CLIENT'S NAME HERE

ORANGE artistic, physical-creative expression, excitement

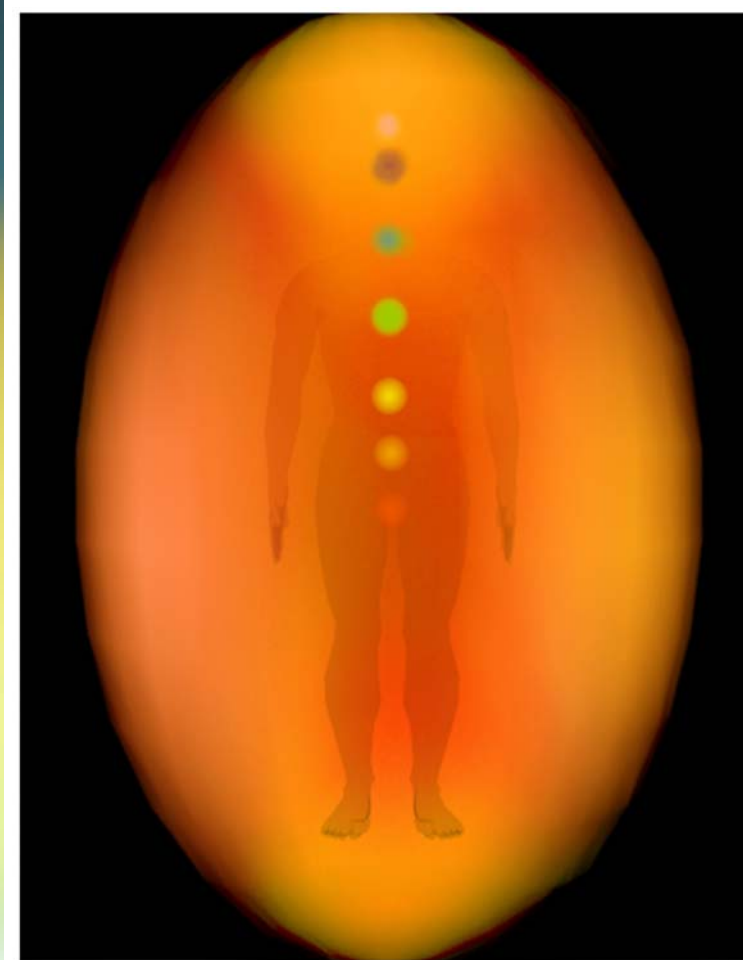
3/7/05 1:38 PM

Inneractive Enterprises Inc. * 4051 Glencoe Ave. Suite # 10 * Venice, CA 90292
Phone 310-578-5810 * Email aura@aura.net * Internet www.aura.net

YOUR COMPANY/CONTACT INFORMATION HERE



Aura Chakra Report



Your client's name here

ORANGE artistic, physical-creative expression, excitement

3/7/05 1:38 PM

Inneractive Enterprises Inc. * 4051 Glencoe Ave, Suite # 10 * Venice, CA 90292
Phone 310-578-5810 * Email aura@aura.net * Internet www.aura.net

YOUR COMPANY/CONTACT INFORMATION HERE



Aura Chakra Report

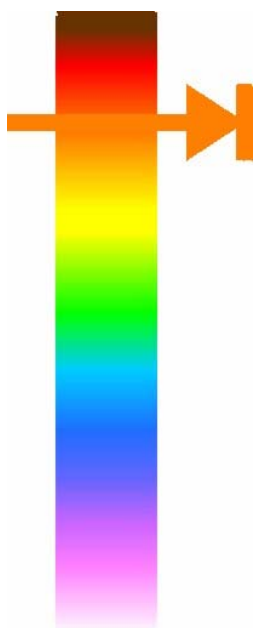
YOUR AURA CHAKRA ANALYSIS

The **AURA VIDEO STATION** measures your Bio-Data through Biofeedback Sensors. This data is analyzed, processed and correlated with specific emotional-energetic states.

Your Aura-Chakra Photo and Report gives you a colorful, visual and graphical representation of the measured Bio-Data. This information is for educational and entertaining purposes only. For *any* medical or therapeutic diagnosis, please consult your health professional.

YOUR AURA COLOR TYPE

Your main aura color reflects your personality type and traits.



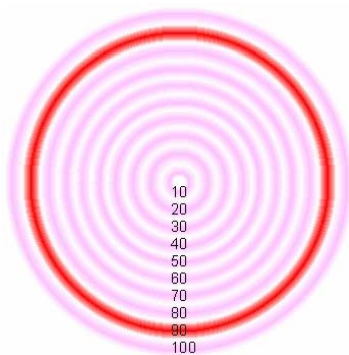
- DEEP-RED** Physical, hardworking, power, realistic, vital, grounded, strength, stamina.
- RED** Excitement, physical, energetic, competitive, winner, will-power, sexual, entrepreneur.
- ORANGE** Productive, physical and creative expression, adventurer, business, enjoyment.
- ORANGE-YELLOW** Analytical, intellectual, detail oriented, logical, structured, scientific.
- YELLOW** Playful, sunny, easy going, creative, intellectual, entertaining, curious, active.
- GREEN** Social, natural, content, harmony, teacher, communicative, quick minded.
- DEEP-GREEN** Quick minded, goal-oriented, social, material, communicative, organizer.
- BLUE** Caring, sensitive, loving, helpful, loyal, peaceful, desire to be of service, nurturing.
- INDIGO** Clarity, calm, deep inner feelings, loving, loyal, introverted, inner values, artistic.
- VIOLET** Intuitive, artistic, sensual, theorist, futuristic, visionary, charismatic, innovative.
- LAVENDER** Imaginative, mystical, fantasy, soft, fragile, sensitive, often spacy, ethereal.
- WHITE** Transcendent, transformation, imaginative, quiet, higher dimensions, spiritual.



Aura Chakra Report

YOUR AURA SIZE

The red circle indicates the **size of your aura** and is an important indicator of how much energy you radiate around you.



Large, Wide Aura (75-100) Indicates a strong and powerful radiance. Other people can feel your strong aura. Use your charisma and aura power to achieve your goals and dreams.

Middle, Average Aura (40-75) Indicates you have a strong presence and radiant energy. You can achieve your goals by increasing your aura even more and focusing on your goals.

Small Aura (0-40) Indicates low energy level. Others might perceive you as introverted or with low physical energy. Try to create a stronger radiance around you and increase your aura power.

CHAKRA SIZE & SHAPE OVERVIEW

Look for the following variations of each **chakra**:



ROUND: Balanced, harmonious chakra activity.



OVAL: Slightly unbalanced chakra.



LARGE: Overactive, high-energy activity.



SMALL: Underactive, low energy activity.



BRIGHT: Balanced, high energy. Positive qualities of chakra.



DARK: Low energy, unbalanced, stressed chakra activity.



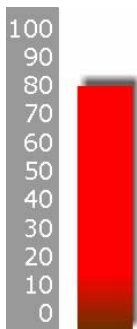
Aura Chakra Report

YOUR CHAKRA ACTIVITY

Knowing about your **energy centers** or **chakras** will help you determine the correct product or treatment to create greater balance and higher energy in your life.

1. BASE CHAKRA

This **chakra** is located at the end of the spine and corresponds to life energy, physical activity, emotional strength, will power and sexuality. Related body areas and organs are joints, muscles, heart, blood and nervous system.



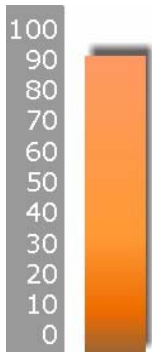
High life energy, radiant, sensual and passionate qualities.

Medium life energy, active lifestyle.

Low life energy, survival, accidents, stress qualities.
You need to recharge your body energies and vitality.

2. NAVEL CHAKRA

This **chakra** is located below the navel and corresponds to creative, productive and emotional expression of life energy. Related body areas and organs are intestines, spleen and digestive track.



High productivity, strong emotional expression.

Medium productivity and emotional creativity.

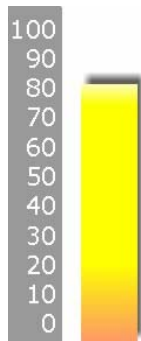
Low productivity and creativity, limited emotional expression.
Increase your creative qualities and abilities.



Aura Chakra Report

3. SOLAR PLEXUS CHAKRA

This **chakra** is located at the solar plexus and corresponds to personal power, creative and intellectual thoughts. Related body areas and organs are stomach, solar plexus and liver.



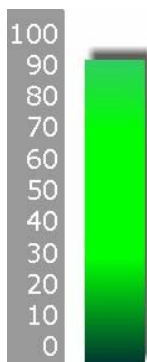
High creativity, intellectual and analytical thinking, playful qualities.

Medium creativity, intellectual and analytical thinking, playful qualities.

Low creativity, intellectual and analytical thinking or playful qualities.
Have more fun and joy in your life, increase your creativity.

4. HEART CHAKRA

This **chakra** is located around the heart and corresponds to communication, speech and social abilities. Related body areas and organs are heart, lungs, chest, circulation, arms and hands.



Very heartfelt, loving and communicative sensitive qualities.

Average communicative, loving and sensitive qualities.

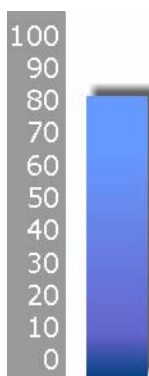
Low heart energy, communicative and expressive qualities.
Need to open heart and feel thoughts and emotions more deeply.



Aura Chakra Report

5. THROAT CHAKRA

This **chakra** is located around the throat and relates to communication, speech, social abilities, verbal and emotional expression. Related body areas and organs are lungs, throat, bronchial and voice.



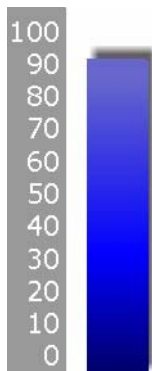
Strong expression of thought, emotions and communicative qualities.

Average loving and communicative, sensitive, qualities.

Unbalanced energy, limited emotional and verbal expression.
Find new ways to express your thoughts and emotions.

6. THIRD EYE CHAKRA

This **chakra** is located between the eyes and corresponds to intuition, vision, and artistic and creative thoughts. The related body areas and organs are the eyes, nervous system, brain and forehead.



High intuitive energy, strong artistic and intuitive qualities.

Medium intuitive energy, average artistic and intuitive qualities.

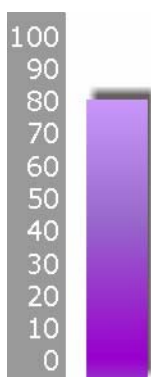
Low intuitive energy, artistic and intuitive qualities.
Need to increase intuition and creative and artistic thoughts.



Aura Chakra Report

7. CROWN CHAKRA

This **chakra** is located on top of the head and corresponds to intuition, spirituality and enlightenment. Related body areas and organs are brain, nervous system and top of head.



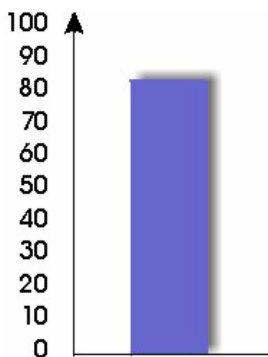
High intuitive energy, radiant, sensitive and spiritual qualities.

Medium intuitive energy, radiant, sensitive and spiritual qualities.

Low intuitive energy, sensitive and spiritual qualities.
Need to find new direction and vision in your life.

YOUR AURA CHAKRA BALANCE

This graph indicates your *overall* **aura chakra** balance.



Very balanced. Aura and chakras are in harmony.

Average balance. Aura and chakras are not fully balanced.

Very unbalanced. Aura and chakras are stressed with low energy.
Improve your aura and chakras conditions. More harmony needed.



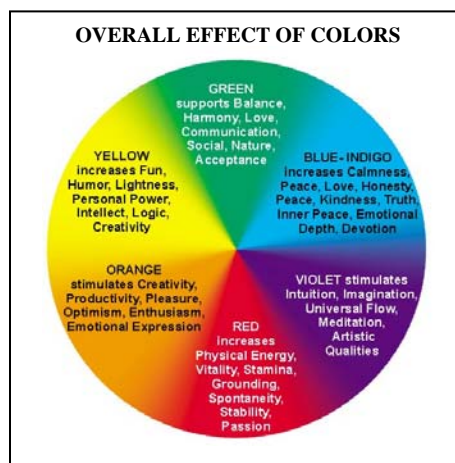
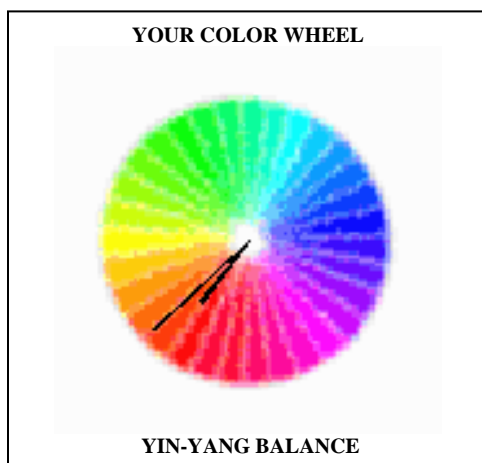
Aura Chakra Report

YOUR BIO-DATA ANALYSIS

The following **bio-data graphs** and **meters** reflect important parts of your energetic body system.

COLOR WHEEL / YIN-YANG

The **color wheel** gives you an overview of the complete aura color range. It is recommended to use your *aura color* or the *complementary/opposite color* to relax and balance yourself.



This graph also indicates your **Yin-Yang balance**. The short needle reflects the Yin-female-left qualities. The long needle the Yang-male-right qualities of your energy system.

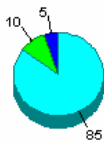
- ✓ Yin-Yang balance with needles close together indicates male-female energies seem to be in harmony.
- ✓ Unbalanced, disharmonious, left-female and right-male energies need balancing.
- ✓ Very unbalanced, one body side might feel tense or stressed. Balancing is recommended.



Aura Chakra Report

YOUR MIND-BODY-SPIRIT GRAPH

This **Mind-Body-Spirit graph** gives you an overview of how your energies are distributed between body, mind and spirit.



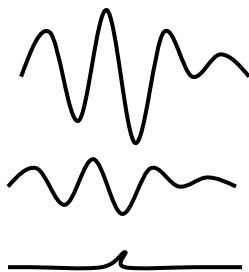
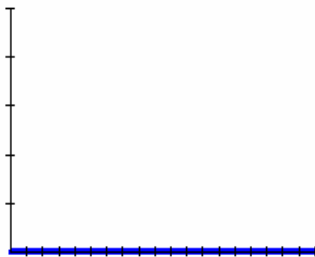
MIND: Your focus is mainly on creativity, mental and emotional expression, and communication.

BODY: Your focus is on physical reality and results, and body related activities.

SPIRIT: Your focus is on personal development, feelings, intuition, spirituality and inner qualities.

YOUR EMOTIOMETER

The **emotimeter** shows your emotional reactions, true thoughts and inner feelings. Real-time graphic indicators display immediate response of true feelings and thoughts.



Highly emotional stressed, agitated,
High excitement, nervousness or sensitivity.

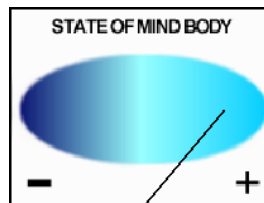
Very emotional and sensitive, expresses emotions freely.

Centered, stable, unemotional, passive, does not express emotions easily, keeps emotions inside.

YOUR STATE OF MIND-BODY GRAPH

The **state-of-mind body graph** displays your overall mind/body condition and is based on your body temperature.

STRESSED
A tense, stressed condition will register when the needle moves towards the left side.



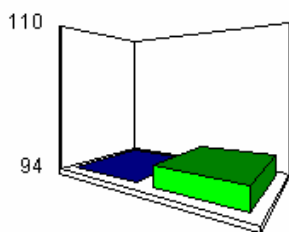
RELAXED
If you are in a relaxed, harmonious state, the needle will move toward the right side of the graph.



Aura Chakra Report

YOUR STRESS/RELAXATION GRAPH

The **relaxation graph** shows your physical relaxation or stress level and is mainly based on your body temperature. The left blue bar is used as a baseline (environment). The green bar and left top numeric value show your **personal relaxation level**.

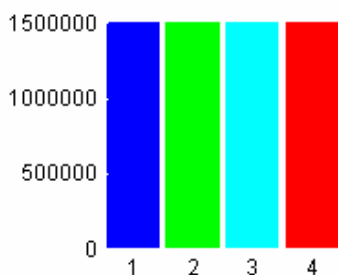


GREEN BAR = YOUR RELAXATION LEVEL

- 120+ High relaxation, very balanced and high energy
- 100
- 95 Average daily physical activity or relaxation level
- 90
- 80- High physical stress, low circulation, low physical energy

YOUR ENERGY LEVEL GRAPH

The **energy level graph** shows the different energy channels that are measured and is based on your *electro-dermal* activity. The **Indigo Channel** represents your **Intuitive** energy. The **Green Channel** represents your **Mental** energy. The **Light Blue Channel** represents your **Emotional** energy. The **Red Channel** represents your **Physical** energy.



- 1,500,000 **Extremely High Vibration Range**
-800,000 More grounding and focus is needed.
- 800,000 **High Vibration Range** Great for intuitive and sensitive activities. More grounding and focus is recommended.
- 500,000 **Medium Vibration Range** Great for daily activities. Shows mind-body-spirit balance.
- 250,000 **Low Vibration Range** Great to achieve goals and recharge your energy. Relaxation is also advised.
- 70,000 **Very Low Vibration Range**
-10,000 Increasing sensitivity and energy level needed.

Even bars indicate that the different energy channels are flowing in harmony and each part of your system is vibrating at the same frequency. Uneven bars show that there is disharmony in your energy flow and part of your system may be out of balance.

The values indicate your **vibrational rate**, starting with low values from 10,000 to high values up to 1,500,000.



Aura Chakra Report

YOUR PERSONAL AURA COLORS

Please review the following areas on your **aura-chakra photo**:

Left Side (Female-Yin)

The color on the left side is normally the vibration coming into your being. It is what you feel inside, but might not have expressed.

Above Head (Thoughts-Beliefs)

The color over your head is what you experience for yourself *now*. It reflects what you think or believe at that moment and shows your current state of mind.

Right Side (Male-Yang)

The color on the right side is traditionally the energy being expressed, the qualities most likely seen or felt by others around you. It is what you are putting out to the world.

Center (Base Aura Color)

Your most dominant Aura Color is seen in the center of your body. This Base Aura Color helps determine your Personality Type and does not change as fast as the outside colors.

Dark, muddy or multiple Aura Colors

You might be stressed, tired or experiencing emotional problems. You may be in a period of tremendous growth and change reflected by several aura colors.

Chakras

The shape, size and intensity of the color of each chakra reflects various physical, emotional, mental and spiritual states within your aura.

Round, circular chakras show a balanced energy system.

Non-circular, blurred chakras show an imbalance in your energy centers. Also look at the color and brightness of each chakra for a more detailed analysis.



Aura Chakra Report

AURA COLORS OVERVIEW

Deep Red:	Realistic, grounded, active, strong will-power, survival-oriented.
Red:	Active, powerful, energetic, vitality, competitive, winner, sexual, passionate, relates to the physical body.
Orange-Red:	Artistic, physical-creative expression, confidence, creative power, excitement.
Orange:	Creative, productive, adventurous, courageous, relates to emotions.
Orange-Yellow:	Analytical thinker, creative, intelligent, scientific, detail-oriented, perfectionist.
Yellow:	Creative, intelligent, playful, lightness, optimistic, easy-going, relates to life energy.
Yellow-Green:	Communicative, logical, balanced, creative with heart.
Green:	Teacher, social, communicator, love people, animals, nature.
Deep-Green:	Quick minded, goal-oriented, social, material, communicative, organizer.
Blue-Green:	Healer, therapist, sensitive, peace, tranquility, compassionate.
Blue:	Caring, sensitive, loving, helpful, intuition, love to help others.
Indigo:	Intuitive, sensitive, loyal, deep feelings, visual, relates to the third eye.
Violet:	Intuitive, artistic, magical, futuristic, idealistic, relates to crown.
Lavender:	Imagination, visionary, daydreamer, ethereal.
White:	Spiritual, transcendent, higher dimensions, ethereal and non-physical qualities.

Your client's name here
3/7/05 1:38 PM

RIGHT DOMINANT

Your male right active body side seems to have a higher energy level than your left female passive side. Answer these questions for yourself:

Do you experience strong inner feelings and emotions?

Do you find it difficult to express your emotions, thoughts or your creativity?

Are you experiencing physical ailments on your right side?

HEART DOMINANT

Your heart energies seem to be very active right now. Answer these questions for yourself:

Do you have friends or family you can share your feelings with?

Do you feel strong and intense emotions in your heart at the moment?

What feelings are waiting to be expressed and shared?

HARMONIOUS / HIGH ENERGY

You seem to have lots of energy right now. Your current bio data and aura indicate that your vitality is high and that you have strong and powerful energy available to achieve whatever you desire. Define your goals very clearly utilizing this harmonious and balanced state of mind / body. Remember to enjoy your success after each project and to relax daily.

Your Individual Aura Color Analysis

Orange in the Aura

Orange represents emotional and creative energies. Remember, orange is a mixture of red and yellow. Red is dynamic energy and action, while yellow is intellect and clear focus. Clear and bright orange is a creative color and radiates self-confidence and a strong personality. You are attractive to others and have a warm and sympathetic heart. Dark and muddy orange means you may be emotionally withdrawn or creatively blocked. Orange is the color associated with the second or Sexual Chakra, the reproduction organs, intestines, adrenals, spleen and kidneys.

Do you express yourself in a creative way?

Do you take care of your physical and emotional needs?

Do you always feel a need to be in control?

Are you sometimes too pushy and too hard on yourself and others?

Do you spend enough time enjoying the pleasures of life?

Do you need help digesting food?

Is it difficult to deal with your emotions or your thoughts?

Orange Around the Head

Clear bright orange in this area indicates an enthusiastic personality literally bursting with ideas that can light fires in others. You are driven by strong emotions and inner clarity knowing exactly what you want. You are willing to go the necessary distance. Dark muddy orange indicates emotional confusion and frustrated creativity. You may have difficulties following through and finishing projects, leading to more anxiety.

Orange on the Left Side

Clear bright orange indicates the incoming of creative energy. As it is absorbed into your field, you may suddenly find yourself able to complete a creative project that you've been working on for a while. Or you may begin to feel a burst of great enthusiastic energy enabling you to start a brand new avenue of creativity with much pleasure and enjoyment. Dark and muddy orange shows a lack of energy that may result in emotional exhaustion. You may want to conserve your resources and avoid taking on added responsibility.

Orange-Yellow on the Right Side

Clear bright Orange-Yellow indicates positive mental energy with easy expression of your creativity, thoughts and ideas. You take great pleasure in some of the simplest things in life and your excitement leads you on to new adventures, success and recognition. Dark and muddy Orange-Yellow shows that you are stressed and perhaps internalizing anger or feelings of disappointment. You might focus too much on your thinking, neglecting your feelings. It may be difficult for you to emotionally interact with others.

Orange in the Heart Area

Clear bright orange in the heart area shows that you send energy to others that they receive as joy of life - sunny, warm and strong. You have the ability to make others feel comfortable when they are with you and this will assist you in gaining recognition and appreciation for your efforts. Dark and muddy orange can indicate great unhappiness, fear, or emotionally based illness. You may be blocked in your creative self-expression and your relationships may be strained.

ORANGE PERSONALITIES

The following are the qualities and action words associated with ORANGE personalities:

Area	Description
<i>Physical</i>	Adventurous, physical, creative, thrill seeker, love to form shape and challenge physical reality, exciting.
<i>Emotional</i>	Happiness, pleasure, positivity, strength, sympathetic, enjoyment of physical reality, self confidence, curiosity, emotional stress.
<i>Mental</i>	Creative, planner, analyzer, productive, ambitious, challenged, controlling, need for action, conviction, tension.
<i>Spiritual</i>	Experience peace and bliss in their adventures or creative projects.
<i>Motivation</i>	Adventurer, thrill of experience, striving to complete projects, excitement or adrenaline rush.
<i>Mission/Vision</i>	To live their creative potential with pleasure and enjoyment.
<i>Growth</i>	Step-by-step, planned, powerful, strong, connected to the earth.
<i>Exercise</i>	Adventurous, outdoor activities, mountain climbing, racing, surfing.
<i>Recharge battery</i>	Relaxation of mind and body, harmonious creative expression, enjoy life.
<i>Communication</i>	Forceful, direct and forthright.
<i>Interaction</i>	Strong and powerful, goal oriented, controlling and manipulative.
<i>Relationships</i>	Companionship, independent individuals, appear self-centered.
<i>Social, Friends</i>	Physical and mentally attractive characters, few close friends.
<i>Sex, Intimacy</i>	Fun and pleasure, physical exercise and release, non-commitment.
<i>Money</i>	Needed for adventures and creative projects.
<i>Success</i>	Level of pleasure and creativity, achieve their own goals.
<i>Occupation</i>	Free-lance, need physical freedom and independence.
<i>Career</i>	Found in business, marketing, sales, manager, organizer, entrepreneur.

If you want to know more about your ORANGE Personality Type, we suggest that you review the ORANGE-YELLOW and RED profile in the book AURA MASTERY .

MIND/BODY

Orange personalities are the creative adventurers in the color spectrum. They have an inner urge to be creative and active, enjoying life to its fullest. They are individual and independent while integrating physical, mental and emotional qualities. They enjoy the challenge and excitement of forming and shaping physical reality. Orange personalities love to imagine and plan strategies for their next adventure or project and then put those plans into action. They need to be involved in the actual working process. They have difficulty sitting back and letting other people do things for them. They are always busy analyzing, organizing and building.

The motivation in life of an Orange is based on how much pleasure and satisfaction they get out of their own adventures, challenges and creative projects. They want to live out their own ideas.

They plan and orchestrate their creative projects extremely well showing themselves and others that they can achieve the results they are aiming for.

Conquering and overcoming the obstacles of the impossible, either within their own mind or within physical reality, is primarily what they are seeking. They also need to convince others of their abilities to be in control of their own success. For these creative adventurers, life is real, concrete and tangible.

Oranges have a need to be in charge of their own physical and mental reality. Their challenge is to integrate this with their emotional body. Sometimes letting go for an Orange means to lose control. Relaxation is key for the balance of these physically or mentally active personalities. The outlet for their adventurous energy is physical or mental creativity with a clear sense of their own emotions.

Physical Orange personalities thrive on excitement, adventure, thrill and danger. They enjoy challenging and conquering all facets of physical, mental and emotional reality. They love to discover their own limitations on all levels and then expand upon them.

Some Orange personalities create unusual, risky and dangerous situations for the purpose of feeling more alive. They love the rush of adrenaline. The prospect of having a family may sound too conservative to these adventurers. Philosophies and concepts of spirituality may not be a focus for them. When Oranges focus that powerful mind energy they have on getting in touch with their feelings, they will open themselves tremendously to new avenues of personal awareness and fulfillment.

Many Orange personalities were found in the past, especially in the pages of history where physical adventure and courage were needed for survival, and when traveling into new territories, discovering new lands and conquering nature or other nations was the way of living.

In today's civilized society these qualities are not needed as much as they were back then. This would explain why most Orange personalities channel their energies into physically creative projects and adventures.

A large percentage of Orange personalities channel their stimulating energies into mental and creative activities versus physical. They are active with their minds and more open to their emotions, executing ideas into physical manifestation. They enjoy working on new, daring enterprises and projects, which promise to be challenging, exiting and adventurous. These courageous people love to do business, create companies, sell and market products, plan and generate strategies and organize and close deals. They are not afraid of details, desiring to personally stimulate and energize their ideas and projects. It is important for them to be actively involved, to get things going, and to keep them going until they are complete.

If they are in harmony and their personality is balanced, Oranges can be filled with a deep personal feeling of confidence and success, finding positive and healthy ways to express their creativity.

Orange personalities are the best analyzers and researchers. They can easily figure out the patterns, risks and advantages involved in any project. They have the capacity to mentally tune into other people, giving them greater command in any situation. This ability to understand what is on the minds of others is widely used in the areas of sales and marketing. It may be used to further projects that assist mankind or strongly misused for self power and profit.

It may be a challenge for Oranges to stop their thinking or planning process. Their physical and mental energies are very powerful and their urge to express and create sometimes creates a lot of stress.

Many Oranges integrate physical and mental creativity. They love to plan, organize and develop new devices or ideas. Then they want to form and shape those ideas until the stage where they can bring them into physical reality. They have a need to be involved in the active creation of their ideas.

Oranges love physical activities, which are thrilling and exiting. They enjoy sports such as surfing, parachuting, hand gliding, mountain climbing, sports car racing or bungee jumping. They thrive on the excitement, pleasure and fulfillment provided by physical movement and adventure.

They prefer individual competition to organized team sports. Oranges often feel uncomfortable if they can't freely move their bodies or find themselves engaged in the wrong type of activity for them.

If an Orange personality is out of balance they can be egotistical, jealous and self centered. They may be only interested in their own actions and ideas, no matter what effects this might have on others. Then they show no affection, caring or compassion and can be distant, cold and aloof.

If an Orange is not connected to their creative power, they try to control and overpower others. On occasion they may try to find a manipulative way of achieving results and success. They use their energy compensating for their disconnection from themselves -- their feelings and their creativity.

Orange personalities must be aware of the responsibility to relax both physically and mentally long enough to get to know themselves. They have a challenge in recognizing who they are emotionally, mentally and spiritually.

The primary mission for Orange personalities is to accept their truly most exciting path - the adventure of self-discovery. This challenge needs more courage than all other outside physical activities combined.

Oranges believe that spirituality and religion are concepts, which need to be expressed in the physical world. In addition they may have a physical perception of God, seeing that Source or Spirit manifest in nature and in our man made world. They believe that their God given gift is to form and shape their own reality as well as the physical reality on planet earth.

Adventurous Oranges love to enjoy life, have fun and be creative. Their primary goal is to get in touch with their emotions, to bring their heart into their creations and to trust their intuition. Integrating and balancing their physical, mental and emotional aspects is essential for personal happiness and fulfillment on all levels. Then, Oranges will be fully in the "here and now," and they will have a spiritual and enlightening glimpse of reality.

SOCIAL LIFE

Orange personalities may prefer to live in their own world of adventure, thrill and excitement and to lose themselves in their own creative projects. They don't particularly care what others or society in general think about them. Nor do they take judgments personally if they are considered to be egotistical, self-absorbed or self-centered. They simply want to do their own thing.

Oranges don't necessarily follow all of the rules of society. They are the ones who constantly challenge societies, personal expectations, limitations and restrictions. Their bodies and minds are designed to conquer all physical limitations and boundaries. It is important for Orange personalities to find adequate and positive outlets of expression for their powerful aspirations.

Oranges possess the capacity to clearly and effectively explain their ideas, and with plenty of fire and courage. Their lesson in life is to express their emotions and communicate through their inner feelings, otherwise they may feel insecure and remain unavailable with a sense of loneliness.

RELATIONSHIPS AND INTIMACY

Orange personalities need a lot of time and space for themselves. Many feel most alive and happy if they have succeeded in a tremendous project or if they are involved in an exhilarating adventure. Close relationships with friends or partners are not essential in their lives. The test of an Orange is to be in touch with their sensitivity, compassion and gentleness. Only then can they form bonding relationships and learn to express their emotions.

Because many Oranges are physically fit, attractive and good looking, they have no difficulty in finding partners and lovers. Some Oranges are not interested in solid, long-lasting partnerships or relationships, being more interested in their projects and adventures than in family and marriage. The challenge, excitement and pleasure of meeting new people may be more thrilling than simply being together with old friends.

It is a challenge for Orange personalities to become emotionally involved and take on the responsibilities of a relationship. If they can feel enough freedom and independence they might be willing to commit to a partner for a longer period of time.

Interacting with other Oranges or Reds often creates an intense and high-energy relationship. Friction and ego based conflicts are not unusual. Deep-Reds and Oranges seem to have similar interests and are very compatible. Orange personalities like the playfulness of Yellows. Both are very creative and productive, therefore have a great deal in common.

Because Blues need closeness and are so sensitive, they may not be attracted romantically. Both Orange and Indigo personalities may have strong inner feelings and creativity, yet they live in a completely different world. Greens and Deep-Greens love to talk about everything for hours, while Oranges need a lot of time to themselves.

Understanding the sensitivity and spiritual nature of Lavender and White personalities is a strong challenge for most Oranges. The practicality of Oranges and the theoretical visions of Violets seem to support each other. On the other hand, Violets may be too spiritual for Oranges.

In reality the biggest challenge for an Orange personality is to create relationships that are ruled by sensitivity, understanding and emotional freedom. To open their own heart is a wonder not to be missed.

CAREER AND FINANCES

Oranges are independent and self-sufficient individuals. They may prefer to have their own business or company and like short term or freelance jobs, rather than long-term commitments.

Because their needs are practical and they have the power to be creative and active, they have the abilities to create their own income. If they have the chance, Oranges love to live an adventurous and thrilling life while finding a way to make money with it.

Oranges generously spend their money for unusual projects or hobbies. They may not desire luxury, but they are more than willing to spend anything and in some cases everything they have, to make their ideas a reality.

Oranges can be strong leaders, but it usually isn't the purpose for why they achieve their innovative goals. They prefer going their own way, fulfilling their own dreams. They can be powerful and creative leaders if they see the necessity of working with other team members. They perform best in an environment, which provides them a certain degree of freedom and independence. Oranges lead by physical example and by their unbridled enthusiasm. Their adventurous and pioneering way of living their life may create admirers and even followers.

Orange personalities are creative problem solvers. They are able to recognize and analyze all factors, calculate the risks involved, go through all possibilities intelligently, making sure they have all the resources they need, and then take action. They prefer physical or mental challenges and are often found in jobs, which guarantee them a degree of freedom in making choices and using their creative energy. Oranges are often found in business, sales, marketing or any other occupation, which allows them to experience personal leverage.

They love to express their powerful creative life energy and are hard working, willing to go the extra mile. Whenever a strong, fearless individual with courage, enthusiasm and determination is needed, look for an Orange.

Some Orange occupations are: stunt men, mountain climbers, businessmen, sales persons, designers, developers, architects, explorers and private investigators.

HEALTH, WELL-BEING AND GROWTH

To take the journey into their inner reality, explore this unknown land and to expand their consciousness is the biggest challenge Oranges will face. And yet, it will be the most gratifying on all levels.

Orange persons reach harmony if they recognize that their life needs balance between body, mind and spirit. To explore the outer as well as the inner world enables them to experience life on more than one level. The moment they connect with their inner creative energy, they will empower themselves with a force unimagined.

Inner knowledge and wisdom can be achieved if the creative energies flow freely and are expressed to help and support humanity. Connecting with their own feelings and staying open and caring toward humanity are vitally important aspects for Oranges.

Orange personalities automatically recharge their batteries if they live their creative capacity in a harmonious way. They must understand that creating dangerous exhilarating experiences leads to unhealthy situations. By using their power to create and help others, and to experience their inner world of sensitivity, feelings and personal growth, they will find positive and harmonious ways of expressing and recharging themselves.

The life purpose of an Orange is to connect with their creative potential and be in touch with their emotional body while experiencing a physical existence. Further, it is to have the freedom to create new pathways and ideas, expanding and surpassing limitations of reality, as others perceive them.

Orange personalities need to be especially aware of their physical and emotional states. Healthy high-energy nutrition is important. An environment in which they can express themselves emotionally and communicate freely with friends and family is crucial.

Sports such as surfing, mountain climbing, horseback riding and motorcycle riding easily and adventurously recharge Orange personalities. The biggest challenge for them is to discover their limits, bringing adventure and independence into highly positive creative expressions in their lives. This will bring them self realization and self fulfillment on levels even they have not dreamed of.

www.aura.net

© 2000 by Inneractive Enterprises Inc. All rights reserved. Aura Video Station, Aura Mastery, Inneractive, Aura Power, Emotional Power, Aura in motion are trademarks of Inneractive Inc.